







INFINITY
CUSTOM HOMES



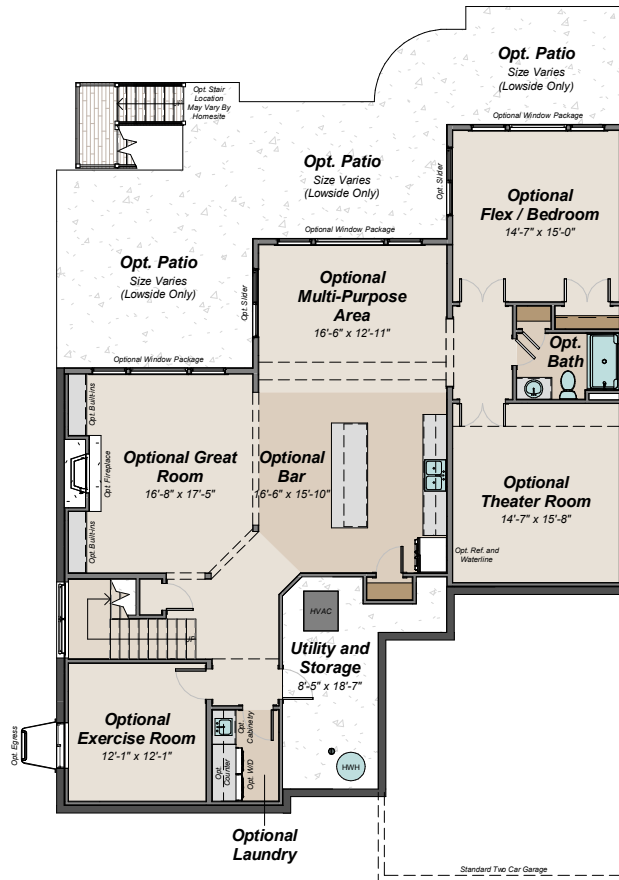
Sedona

 | FRONT-ENTRY GARAGE

-  4 - 5 BEDROOMS
-  3 ½ - 5 ½ BATHS
-  2 CAR ATTACHED GARAGE
-  3,010 SQFT AND ABOVE



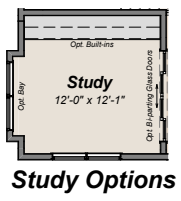
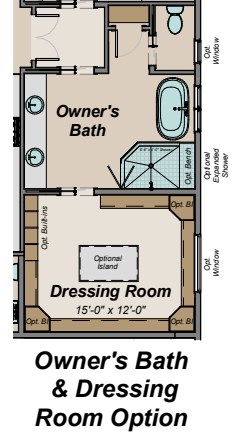
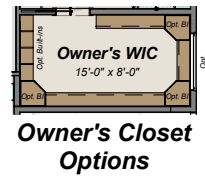
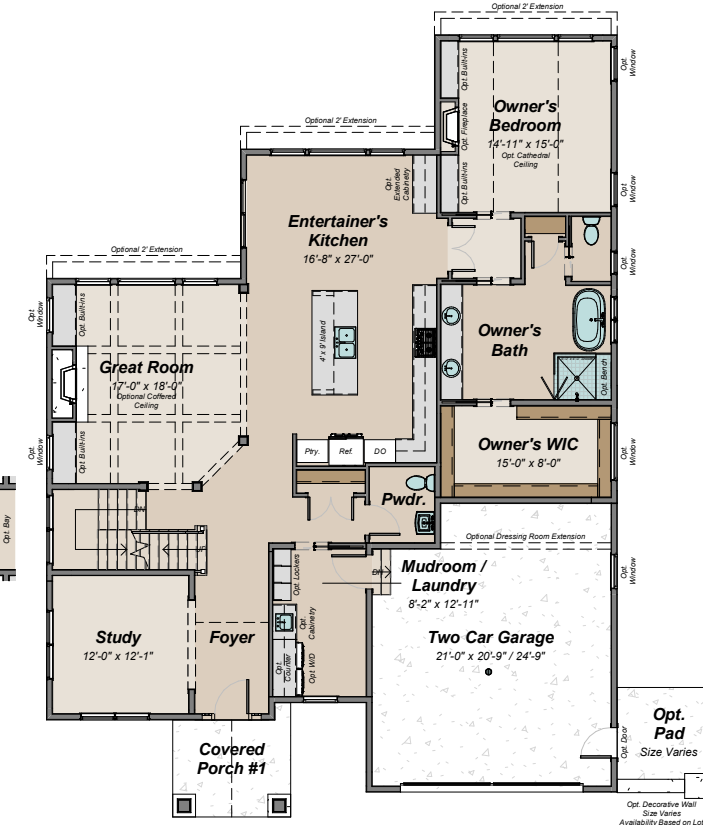
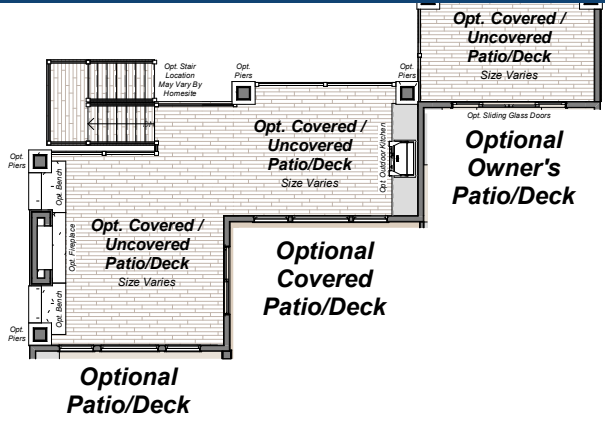
BASEMENT



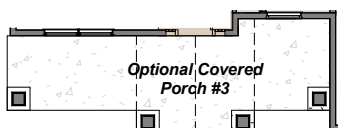
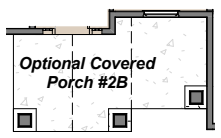
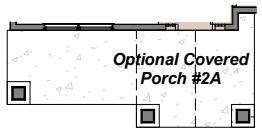
OPTIONAL FINISHED BASEMENT

Standard 9'-0" Foundation Walls
Dimensions/Layout are subject to change
and may vary based on exterior and
interior selections

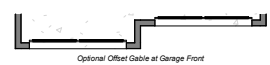
FIRST FLOOR



INCLUDED FIRST FLOOR
Standard 10'-0\"/>



Porch Upgrades

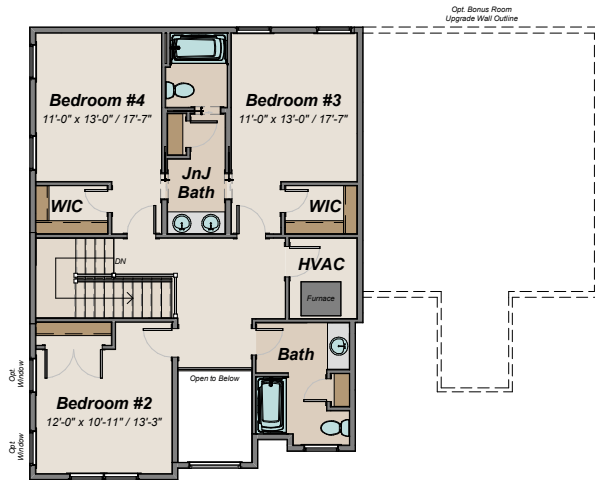


Optional Garage Fronts



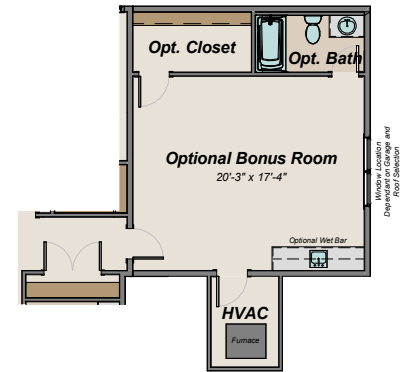
Renderings are artist's conception for illustrative purposes only and not part of a legal contract. All information is subject to change without notice. Floorplan dimensions are approximate. ©Infinity Custom Homes. All rights reserved.

SECOND FLOOR



INCLUDED SECOND FLOOR

Standard 9'-0" Ceilings



Optional Bonus Room and Optional Bath